

Client



Source

**Tea Tree** (*Melaleuca alternifolia*)

EVS-2026-NG-13

Sample

Tea Tree (*Melaleuca alternifolia*)

Batch #: AU-59538
Type: Essential Oil
Origin: Australia
CAS #: 68647-73-4

Client

NATURE'S GIFT

Properties

RI: NT
SG: NT

Primary

34.40% | Terpinen-4-ol
15.12% | gamma-Terpinene
8.23% | alpha-Terpinene
4.53% | para-Cymene

Result

**Pass**

Meets specifications

ANALYSIS SUMMARY

Total Compounds: 71

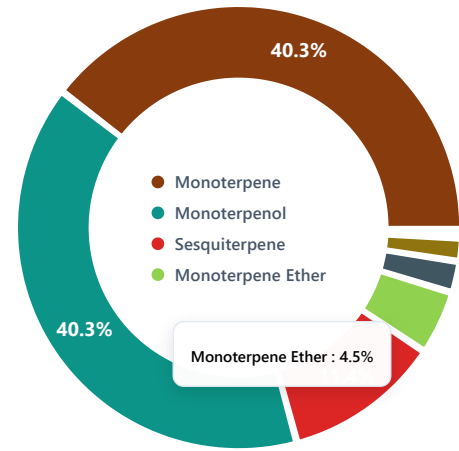
Lab

**Essential Validation Services**

EO Testing Lab

240 Goose Hollow Road
 Berthoud, Colorado 80513

Phone: (317) 361-5044

essentialvalidationservices.com**CHEMICAL FAMILY BREAKDOWN****TOTAL CONTENT IDENTIFIED**

98.0% identified
 2.0% unidentified

Conclusion

PROFESSIONAL ANALYSIS SUMMARY

Analysis of this Tea Tree (*Melaleuca alternifolia*) Essential Oil sample was conducted against the Tea Tree (*Melaleuca alternifolia*) standard specification. The chromatographic analysis accounted for 98.0% of the total sample composition. All major constituents were found to be within the expected ranges specified in the standard. No adulterants, diluents, or contaminants were detected via this method. This oil meets the expected profile for genuine Tea Tree (*Melaleuca alternifolia*).

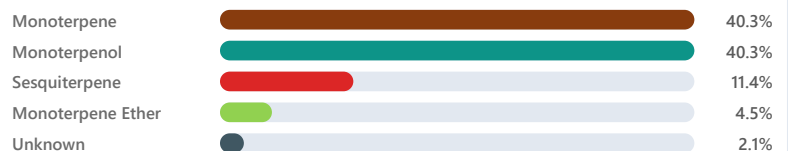
Adam Christensen • Mar 21, 2026

Adam Christensen

Analyst Signature

Date

Mar 21, 2026

CHEMICAL FAMILY DISTRIBUTION

Client



Source

**Tea Tree** (*Melaleuca alternifolia*)

EVS-2026-NG-13

Expected vs. Detected Components

Comparison against EVS Internal Standard for Tea Tree (*Melaleuca alternifolia*) - Essential Validation Services

Compound	Expected	Detected	Status	Family
1 Terpinen-4-ol	30.00-48.00%	34.40%		Monoterpenol
2 gamma-Terpinene	10.00-28.00%	15.12%		Monoterpene
3 1,8-Cineole	0.00-20.00%	4.47%		Monoterpene Ether
4 Sabinene	0.01-20.00%	0.77%		Monoterpene
5 alpha-Terpinene	5.00-14.00%	8.23%		Monoterpene
6 Terpinolene	1.50-13.00%	3.55%		Monoterpene
7 para-Cymene	0.50-12.00%	4.53%		Monoterpene
8 alpha-Terpineol	0.71-8.00%	3.73%		Monoterpenol
9 alpha-Pinene	1.00-6.00%	2.41%		Monoterpene
10 delta-Cadinene	0.01-3.80%	1.98%		Sesquiterpene
11 Aromadendrene	0.01-3.35%	1.36%		Sesquiterpene
12 Viridiflorene	0.00-3.20%	1.79%		Sesquiterpene
13 Limonene	0.02-1.50%	1.15%		Monoterpene

Professional Analysis Summary

1 Sample Analysis

This Tea Tree (*Melaleuca alternifolia*) sample shows **71** detected compounds (**71** identified, 100.0% rate).

2 Major Components

Predominant: **Terpinen-4-ol** (34.4%), **gamma-Terpinene** (15.1%), **alpha-Terpinene** (8.2%), +11 others.

3 Chemical Profile

8 chemical families: Monoterpenol, Monoterpene, Monoterpene Ether, +5 others.

4 Quality Assessment

Sample **meets** specifications for Tea Tree (*Melaleuca alternifolia*).

Client



Source

Tea Tree (*Melaleuca alternifolia*)

EVS-2026-NG-13

Total Percentage:

97.98%

Number	RT	Area %	Compound Name	Chemical Family
1	8.42	0.05%	cis-Hex-3-en-1-ol	Aliphatic Alcohol
2	10.37	1.00%	alpha-Thujene	Monoterpene
3	10.66	2.41%	alpha-Pinene ✓	Monoterpene (1.00%-6.00%)
4	11.82	0.77%	Sabinene ✓	Monoterpene (0.01%-20.00%)
5	12.03	0.81%	beta-Pinene	Monoterpene
6	12.16	0.80%	Myrcene	Monoterpene
7	12.58	0.01%	(Z)-3-Hexenyl acetate	Aliphatic Ester
8	12.84	0.70%	alpha-Phellandrene	Monoterpene
9	13.26	8.23%	alpha-Terpinene ✓	Monoterpene (5.00%-14.00%)
10	13.51	4.53%	para-Cymene ✓	Monoterpene (0.50%-12.00%)
11	13.69	1.15%	Limonene ✓	Monoterpene (0.02%-1.50%)
12	13.77	1.21%	beta-Phellandrene	Monoterpene
13	13.84	4.47%	1,8-Cineole ✓	Monoterpene Ether (0.00%-20.00%)
14	14.17	0.02%	(Z)-beta-Ocimene	Monoterpene
15	14.79	15.12%	gamma-Terpinene ✓	Monoterpene (10.00%-28.00%)
16	15.10	0.32%	cis-Sabinene hydrate	Monoterpenol
17	15.94	3.55%	Terpinolene ✓	Monoterpene (1.50%-13.00%)
18	16.14	0.11%	Linalool	Monoterpenol
19	16.33	0.38%	trans-Sabinene hydrate	Monoterpenol
20	17.28	0.29%	cis-para-Menth-2-en-1-ol	Monoterpenol
21	17.74	0.05%	Terpinen-1-ol	Monoterpenol
22	17.99	0.28%	trans-para-Menth-2-en-1-ol	Monoterpenol
23	19.17	0.01%	delta-Terpineol	Monoterpenol
24	19.76	34.40%	Terpinen-4-ol ✓	Monoterpenol (30.00%-48.00%)
25	19.84	0.10%	para-Cymen-8-ol	Monoterpenol
26	20.17	3.73%	alpha-Terpineol ✓	Monoterpenol (0.71%-8.00%)
27	20.39	0.09%	cis-Piperitol	Monoterpenol
28	20.83	0.22%	trans-Piperitol	Monoterpenol
29	21.51	0.02%	Nerol	Monoterpenol
30	22.55	0.02%	Geraniol	Monoterpenol
31	22.91	0.01%	Piperitone	Monoterpene Ketone

Client



Source

Tea Tree (*Melaleuca alternifolia*)

EVS-2026-NG-13

Number	RT	Area %	Compound Name	Chemical Family
32	23.47	0.22%	trans-Ascaridol glycol	Monoterpenol
33	24.59	0.02%	Carvacrol	Monoterpenol
34	25.10	0.03%	Ascaridole	Monoterpenol
35	26.53	0.51%	delta-Elemene	Sesquiterpene
36	27.03	0.12%	alpha-Cubebene	Sesquiterpene
37	28.14	0.10%	Isoledene	Sesquiterpene
38	28.26	0.25%	alpha-Copaene	Sesquiterpene
39	28.83	0.14%	beta-Elemene	Sesquiterpene
40	29.20	0.03%	Sativene	Sesquiterpene
41	29.75	0.41%	alpha-Gurjunene	Sesquiterpene
42	30.20	0.54%	beta-Caryophyllene	Sesquiterpene
43	30.52	0.10%	Longifolene	Sesquiterpene
44	30.86	0.11%	beta-Gurjunene	Sesquiterpene
45	31.01	1.36%	Aromadendrene ✓	(0.01%-3.35%) Sesquiterpene
46	31.14	0.17%	alpha-Guaiene	Sesquiterpene
47	31.27	0.02%	6,9-Guaiadiene	Sesquiterpene
48	31.40	0.27%	trans-Muuro-la-3,5-diene	Sesquiterpene
49	31.53	0.05%	gamma-Patchoulene	Sesquiterpene
50	31.60	0.12%	alpha-Humulene	Sesquiterpene
51	31.78	0.03%	27.16 Aromadendrane<dehydro->	Unknown
52	31.91	0.71%	allo-Aromadendrene	Sesquiterpene
53	32.27	0.79%	trans-Cadina-1(6),4-diene	Sesquiterpene
54	32.36	0.07%	gamma-Muuro-lene	Sesquiterpene
55	32.96	0.21%	beta-Cadinene	Sesquiterpene
56	33.23	1.79%	Viridiflorene ✓	(0.00%-3.20%) Sesquiterpene
57	33.30	0.77%	Bicyclgermacrene	Sesquiterpene
58	33.61	0.04%	beta-Guaiene	Sesquiterpene
59	33.91	0.04%	gamma-Cadinene	Sesquiterpene
60	34.19	1.98%	delta-Cadinene ✓	(0.01%-3.80%) Sesquiterpene
61	34.35	0.32%	Zonarene	Sesquiterpene
62	34.62	0.34%	trans-Cadina-1,4-diene	Sesquiterpene
63	35.06	0.02%	alpha-Calacorene	Sesquiterpene
64	35.82	0.07%	Longipinanol	Sesquiterpenol



Tea Tree (*Melaleuca alternifolia*)

EVS-2026-NG-13

Number	RT	Area %	Compound Name	Chemical Family
65	36.17	0.08%	Maaliol	Sesquiterpenol
66	36.50	0.14%	Spathulenol	Sesquiterpenol
67	36.62	0.03%	Gleenol	Sesquiterpenol
68	36.79	0.31%	Viridiflorol	Sesquiterpenol
69	38.22	0.10%	Rosifoliol	Sesquiterpenol
70	38.36	0.22%	1-epi-Cubenol	Sesquiterpenol
71	38.72	0.49%	Isospathulenol	Sesquiterpenol

